

GENERAL INFORMATION

YJQ-W7QB is compatible with the M22520/7-01 which is widely used for the crimping of wires and contacts in electronic connectors.

Wire crimp range: 16AWG (1.32 mm²) - 28AWG (0.08 mm²) ;

Contacts Range : 16-22AWG

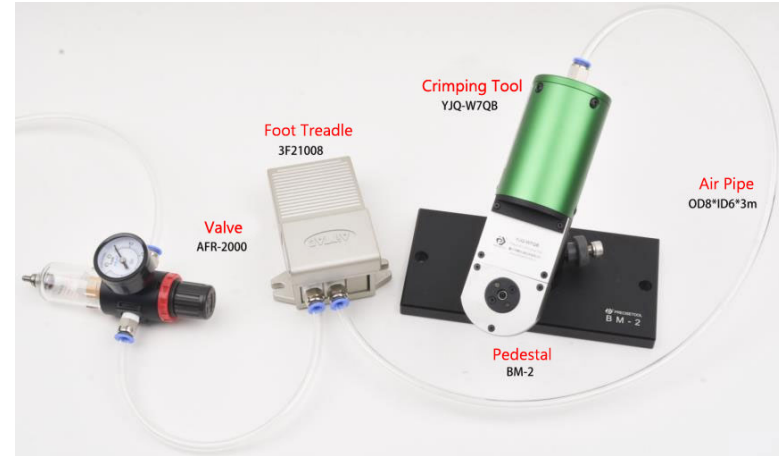
Selector No.	Intender Working Diameter mm/INCH	
	A (GO)	B (NO GO)
1	0.41/0.016	0.53/0.021
2	0.48/0.019	0.61/0.024
3	0.56/0.022	0.69/0.027
4	0.64/0.025	0.76/0.030
5	0.74/0.029	0.86/0.034
6	0.84/0.033	0.96/0.038
7	0.94/0.037	1.07/0.042
8	1.04/0.041	1.17/0.046



Crimping Sample

CRIMPING INSTRUCTIONS

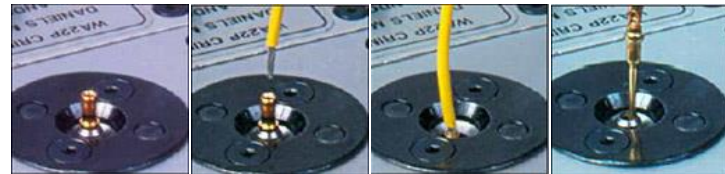
1. Connect all the parts according to the below pictures.



2. This tool matches all the positioners which are suitable for M22520/7-01 hand crimping tool (need purchase separately). It contains a dial which has 8 selections to adjust the working diameters of the 4 indenters. (check the left table)



3. Crimping instruction: firstly insert the contact and wire, supply the air by foot treadle or manual button, release the foot treadle or manual button after the crimping complete. Take out the contact when the indenter back to the original position.



WORKING PRINCIPLES

- The crimp tool adopts curve propulsion mechanism, its applied force transfers through four curves in the head cavity of the right plier handle to the four indenters. The four indenters do the centripetal linear motion, which makes its front-end teeth crimp the contact to complete the crimping process. The cycle controlled precision ratchet assures the consistency of impression and the crimping quality of wires and contacts.
- Ratchet and rack match up the self-locking mechanism ensure the accordance of each crimping. Lack of air pressure or short of air supporting time will cause the tool not be able to crimp properly, the press mould can not return to the correct place because of the self-locking mechanism. By adjusting air pressure or increase the air supporting time, the press mould will arrive to the correct place, the problem can be solved.
- This crimp tool has eight working selections. Firstly, take out the locking pin, lift up the select knob and rotate, make sure the pointer align with the desired selection, then put down the select knob, start crimping the contacts.
- The crimp tool can only be controlled by foot control value (check the right picture), convenient and fast.

CAUTIONS

- Do not crimp any hard steel material or not matched size contacts, please contact us if the tool get stuck by improper use.
- Working air pressure: 80-120 P.S.I. Max air pressure: 120 P.S.I. (5.5-8.3BAR)